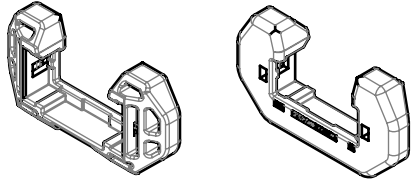
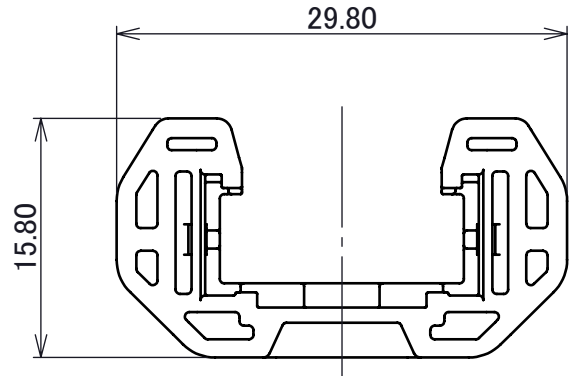
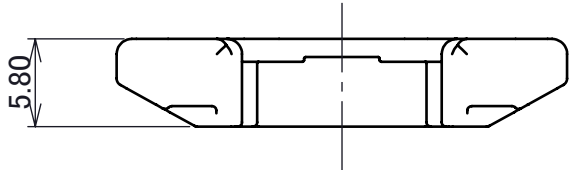
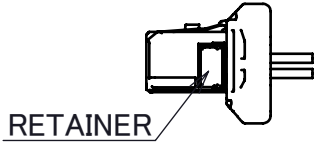
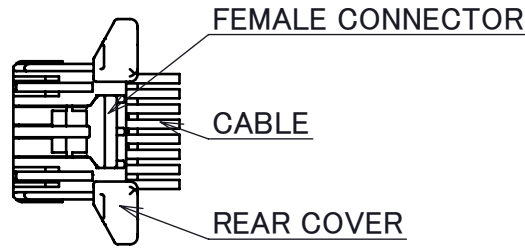
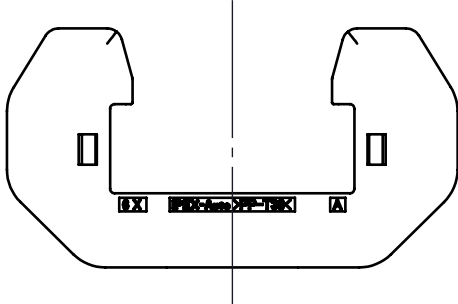
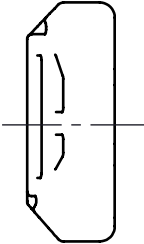


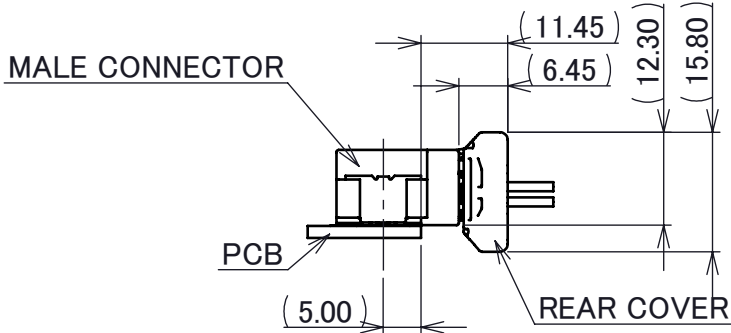
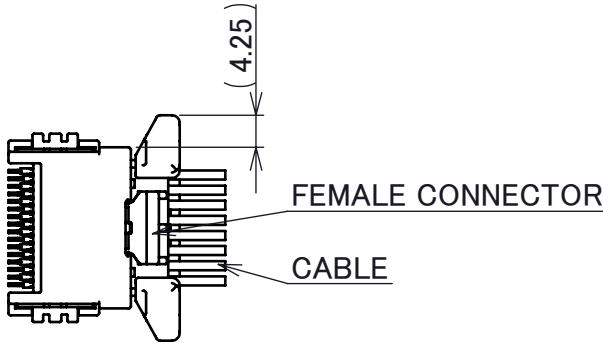
PART NO.
V0116-94016-01



ISOMETRIC VIEW  
1:1



REAR COVER ASSEMBLY  
1:1



MATING STATE  
1:1

NOTES

1. APPLICABLE PART NO.:  
•FEMALE HOUSING...V0116-91016-02
2. MATERIAL : PP-T30
3. COMPLY WITH ELV/RoHS.
4. HANDLE OF PRODUCT IN COMPLIANCE WITH HANDLING MANUAL【HDM-0020】
5. INSERTION FORCE TO FEMALE HOUSING : 55N MAX.  
REMOVAL FORCE FROM FEMALE HOUSING : 30N MIN.

					1	REAR COVER		PP-T30	BLACK				
					NO.	DESCRIPTION		MATERIAL	FINISH/COLOR/REMARKS				
					ANGLE	±2°	6 OVER 30 MAX.	±0.3	<div>PROJECTION</div> <div></div>	SERIES No.	CUSTOMER COPY		
				6 MAX.	±0.2	30 OVER 120 MAX.	±0.5						
					GENERAL TOLERANCE.		120 OVER	±0.5%	<div>TITLE</div> <div>ISH® 16P</div> <div>FEMALE REAR COVER</div>	R0	SCALE	I-PEX	
				DWG.	H. HAMACHI		DATE	Mar. /31/' 23			2:1		
				CHK.	J. MUKUNOKI		DATE	Mar. /31/' 23			UNIT		
0	S2330	H.H	Mar./31/'23								mm		
REV.	ECN	BY	DATE	APP.	APP.	J. TATEISHI		Mar. /31/' 23	DWG. No.	CV0116-94016	SIZE	SHEET	REV.
REVISION RECORD											A3	1/1	0